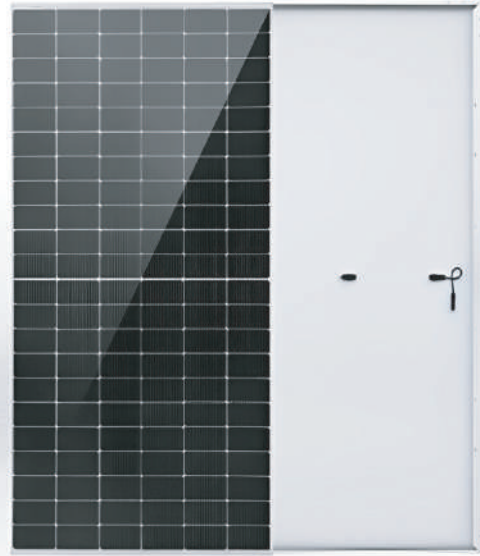




HW-7N66HC-MF

600W~620W

MONOCRYSTALLINE MODULE



ADVANCED PERFORMANCE & PROVEN ADVANTAGES

- High module conversion efficiency up to 23.00% by using the most advanced N-Type TOPCon cell technology.
- Lower annual power degradation and higher energy yield during the module's lifetime.
- Superior performance under high temperature and low light conditions.
- High load-bearing capacity which can withstand wind loads up to 2400Pa and snow loads up to 5400Pa.
- Excellent reliability and durability against extreme environmental conditions (high resistance to salt mist, ammonia, sand, acid and alkali, etc).
- Potential induced degradation (PID) free

CERTIFICATIONS

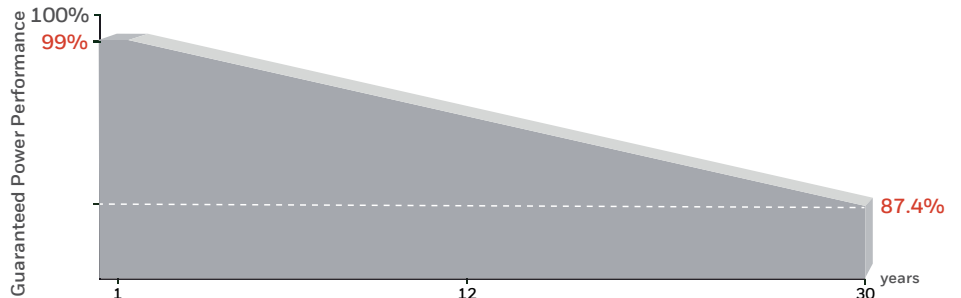
- IEC 61215 (2021), IEC 61730 (2023), IEC 61701
- IEC61215-2 (bifaciality): 2021
- ISO 9001:2015: Quality Management System
- ISO 14001:2015: Environment Management System
- ISO 14001:2018: Occupational health and safety management system

SPECIAL WARRANTY

- 20 years product warranty
- 30 years linear power output warranty
- < 1 % First year power degradation
- < 0.4 % Year 2-30 power degradation



Passionately
committed to
delivering innovative
energy solutions



ELECTRICAL CHARACTERISTICS AT STC

Maximum Power (P _{max})	600W	605W	610W	615W	620W
Open Circuit Voltage (V _{oc})	47.7 V	47.9V	48.1 V	48.3 V	48.5 V
Short Circuit Current (I _{sc})	15.95 A	16.00 A	16.05 A	16.10A	16.15A
Voltage at Maximum Power (V _{mp})	39.44V	39.60 V	39.77 V	39.96 V	40.15 V
Current at Maximum Power (I _{mp})	15.21 A	15.28 A	15.34 A	15.39 A	15.45 A
Module Efficiency (%)	22.20	22.40	22.60	22.80	23.00
Operating Temperature	-40°C to +85°C				
Maximum System Voltage	1500V DC				
Fire Resistance Rating	Class C				
Maximum Series Fuse Rating	30 A				

STC: Irradiance 1000W/m², Cell temperature 25°C, AM1.5; Tolerance of P_{max}: ±3%; Measurement Tolerance: ±3%

ELECTRICAL CHARACTERISTICS AT NOCT

Maximum Power (P _{max})	453.60W	457.38W	461.16W	464.94W	468.72W
Open Circuit Voltage (V _{oc})	44.84V	45.03V	45.21V	45.40V	45.58V
Short Circuit Current (I _{sc})	12.68 A	12.72A	12.76 A	12.80A	12.84 A
Voltage at Maximum Power (V _{mp})	37.27 V	37.42 V	37.58 V	37.76V	37.94 V
Current at Maximum Power (I _{mp})	12.17A	12.22 A	12.27 A	12.31A	12.36 A

NOCT: Irradiance 800W/m², Ambient temperature 20°C, Wind Speed 1 m/s

MECHANICAL CHARACTERISTICS

Cell type	Monocrystalline Silicon N-type (182x210mm)
Number of cells	132 (6x11x2)
Module dimensions	2382x1134x30mm
Weight	28.5kg
Front cover	low-iron tempered glass / 3.2mm
Backsheet	TPT in white
Frame	Anodized aluminum alloy
Junction box	IP68, 3 diodes
Cable	4mm ² , 300mm in length, length can be customized
Connector	MC4 compatible

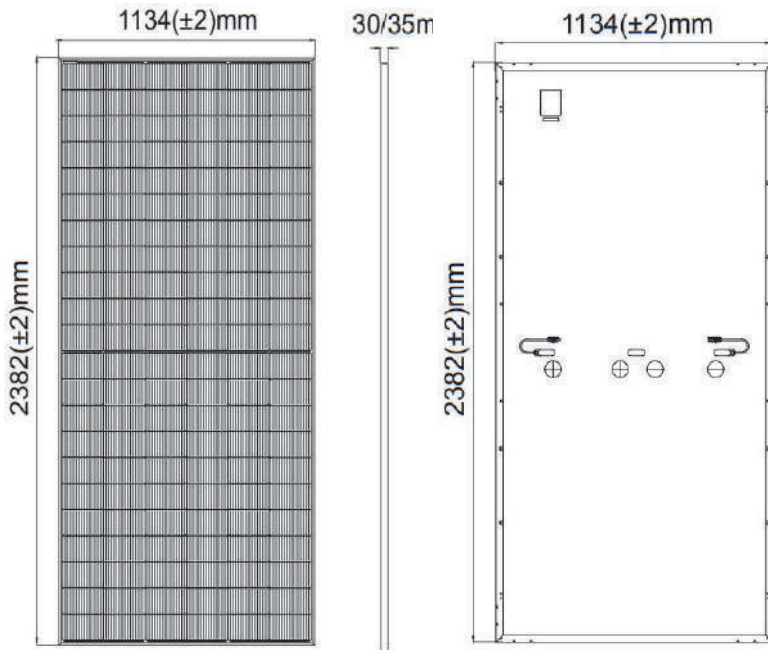
TEMPERATURE CHARACTERISTICS

Nominal Operating Cell Temperature (NOCT)	45°C±2°C
Temperature Coefficients of P _{max}	-0.30%/°C
Temperature Coefficients of VOC	-0.24%/°C
Temperature Coefficients of ISC	0.043%/°C

PACKAGING

Standard packaging	36 pcs/pallet
Module quantity per 20' container	180 pcs
Module quantity per 40' container	720 pcs (HQ)

ENGINEERING DRAWINGS



CURRENT-VOLTAGE CURVES

